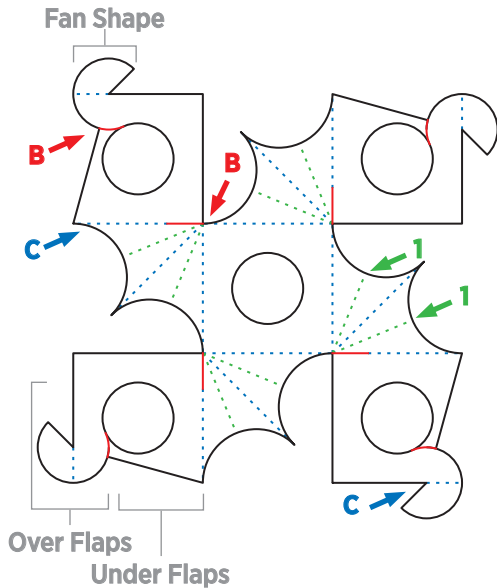


## KAMIGAWA: NEON DYNASTY PAPERCRAFT

# RETRACTABLE THROWING STAR

### INSTRUCTIONS

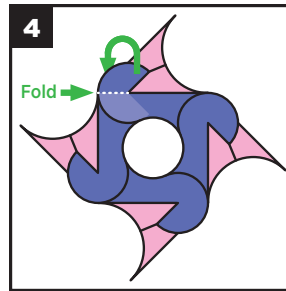


**A:** Print one of the pages with the flat artwork on letter-sized paper. Select "Do Not Scale" or "Actual Size" so the model will be as large as possible.

**B:** Cut out all the artwork, including all solid lines (shown in red on the diagram to the left). Don't forget to cut out all five circles!

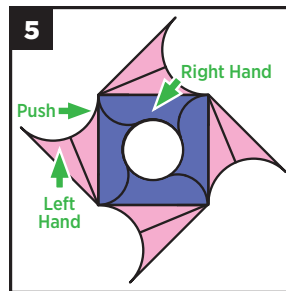
**C:** Fold all dotted lines (shown in blue and green on the diagram to the left) as accurately as possible. A good tip is to pinch along the folds before fully creasing.

**D:** Note the names of parts called out in gray. They will be used later in these instructions.



**4:** If done correctly, your star should look like the diagram to the left. The four sides should overlap like you're folding the top of a cardboard box to close it.

Fold and tuck each **Fan Shape** part inside the cut, so that the **Fan Shape** goes inside the corner of the square (see the green arrow).

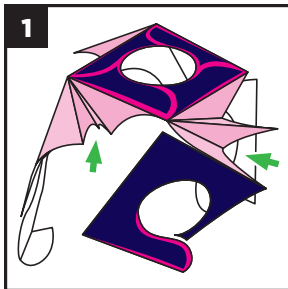


**5: Congratulations, you have a finished Papercraft Throwing Star!**

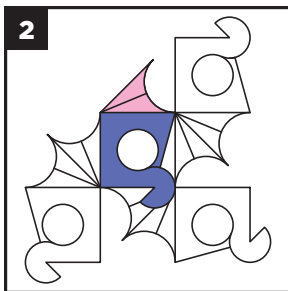
To retract the blades, hold the star firmly in your right hand where shown. With your left hand, grab the left blade where shown and push your hands together. The parts in between should bow apart a little, and the accordion fold you made in step 1 should

allow the blade to retract within the star. Repeat for each blade. The blades store inside the body of the star.

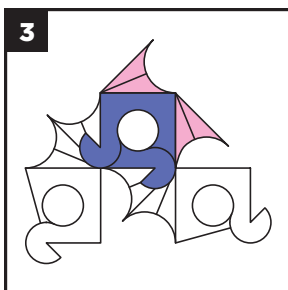
To extend the blades, simply hold firmly with your right hand in the same spot as before, reach inside with your left hand, and pull them out.



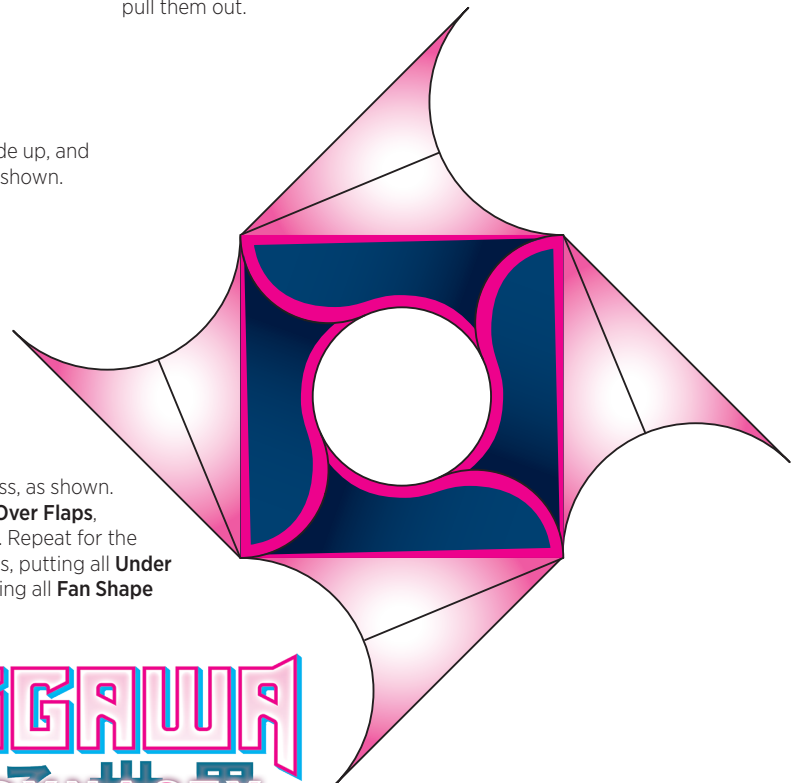
**1:** Reverse the folds shown in green in the diagram above. This will create accordion folds along the light pink parts, as shown in the diagram to the left.



**2:** Unfold the shape and lay it flat, blank-side up, and fold the top-left section over and down as shown.



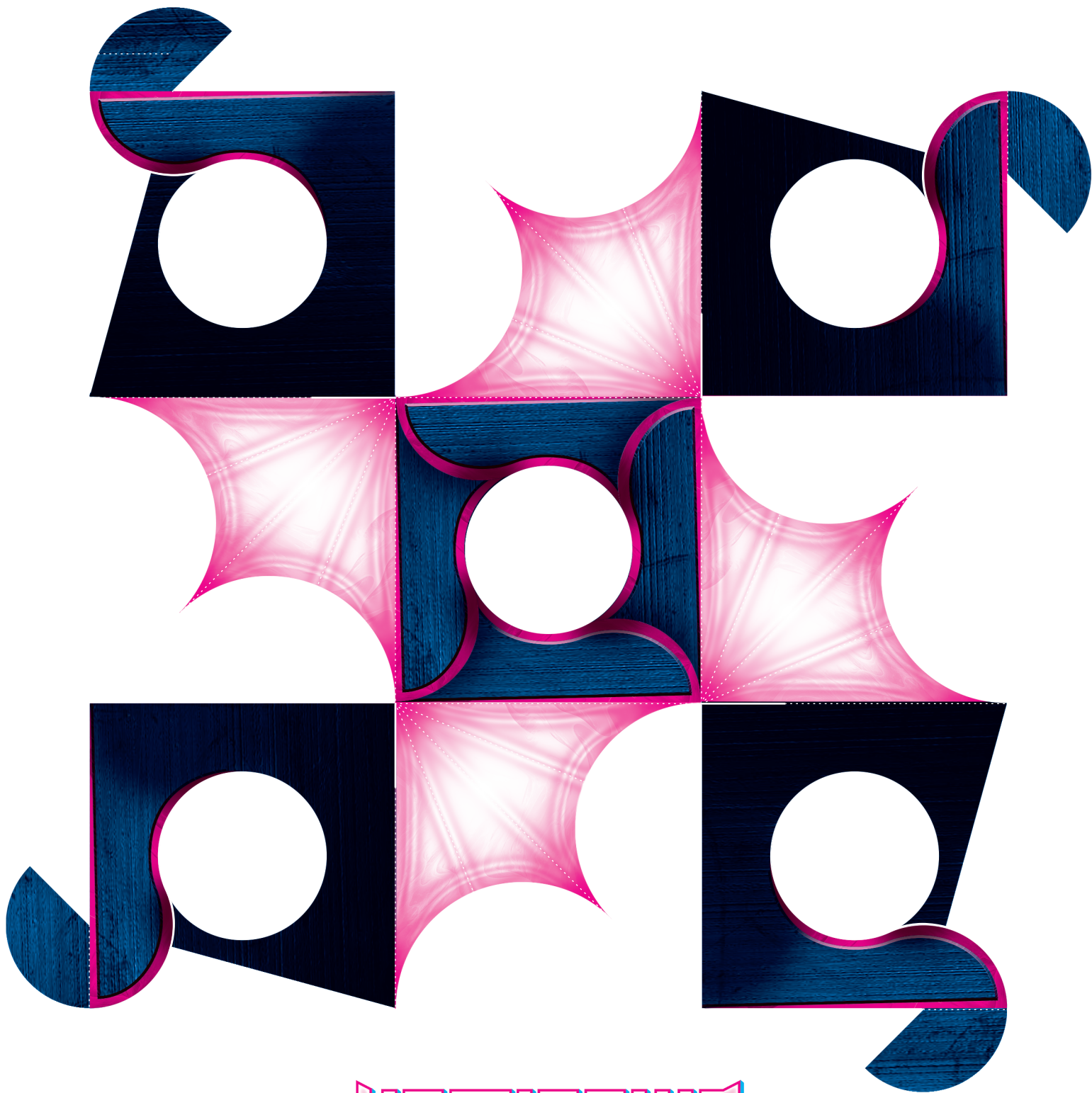
**3:** Fold the top-right section over and across, as shown. Be sure to put the **Under Flaps** under the **Over Flaps**, and be sure all **Fan Shape** parts are on top. Repeat for the bottom-right and then bottom-left sections, putting all **Under Flaps** beneath all the **Over Flaps** and keeping all **Fan Shape** parts on top.



**KAMIGAWA**  
NEON DYNASTY



**KAMIGAWA: NEON DYNASTY PAPERCRAFT**  
**RETRACTABLE THROWING STAR**



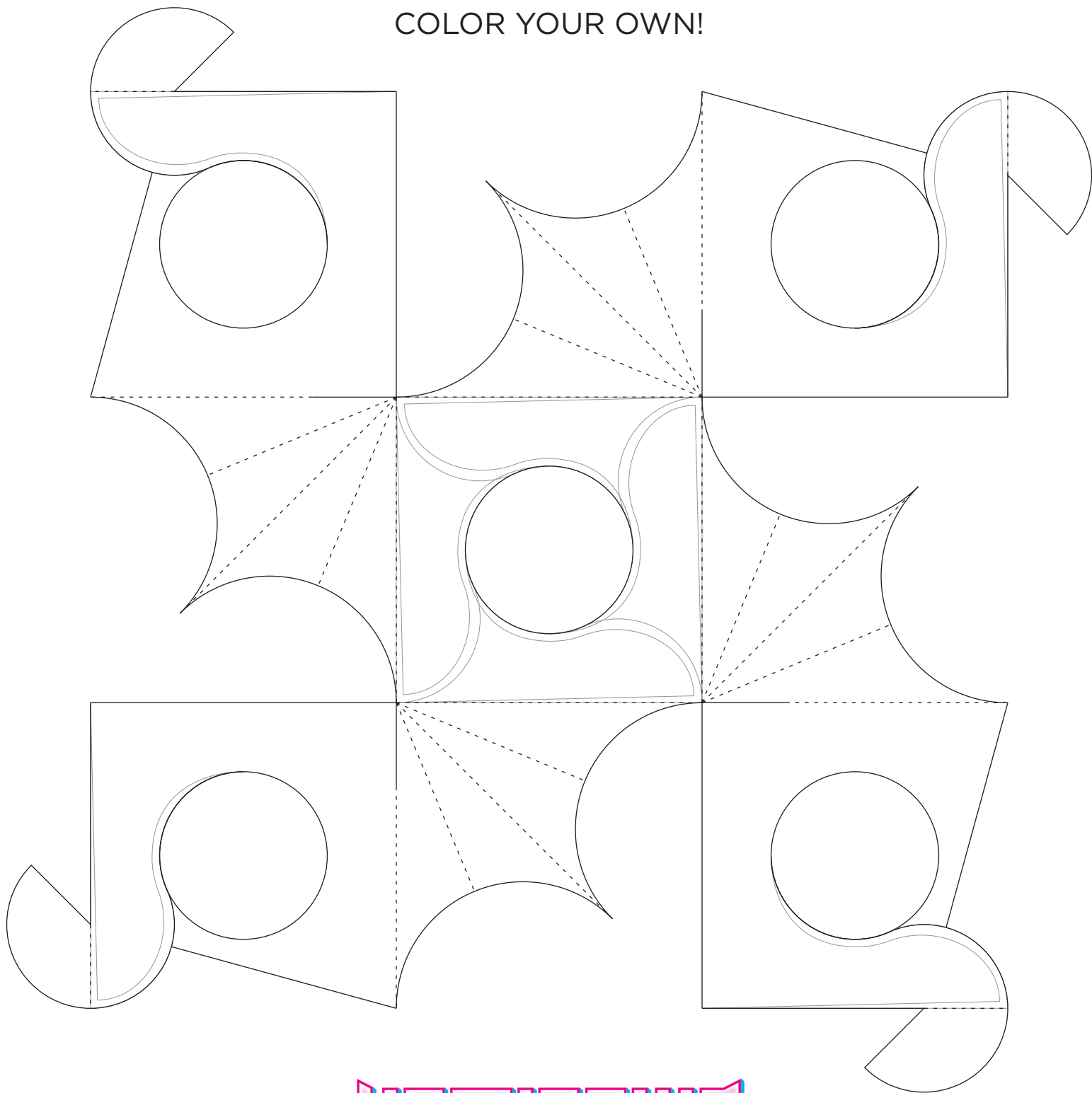
**KAMIGAWA**  
**輝ける世界**  
**NEON DYNASTY**



**KAMIGAWA: NEON DYNASTY** PAPERCRAFT

**RETRACTABLE THROWING STAR**

COLOR YOUR OWN!

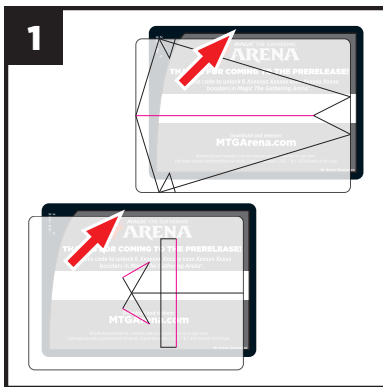
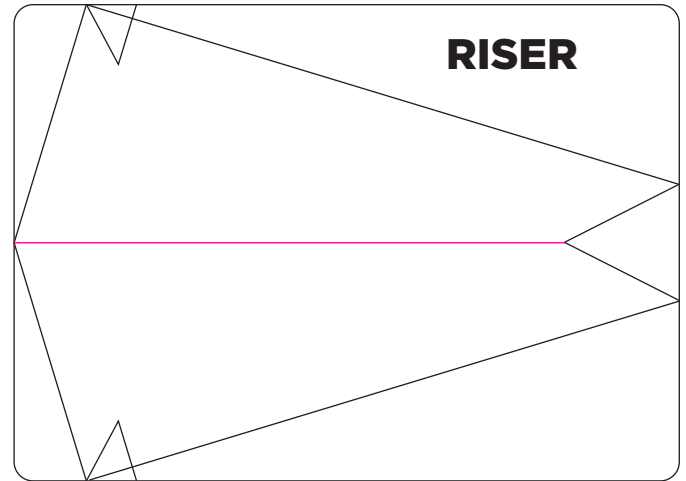
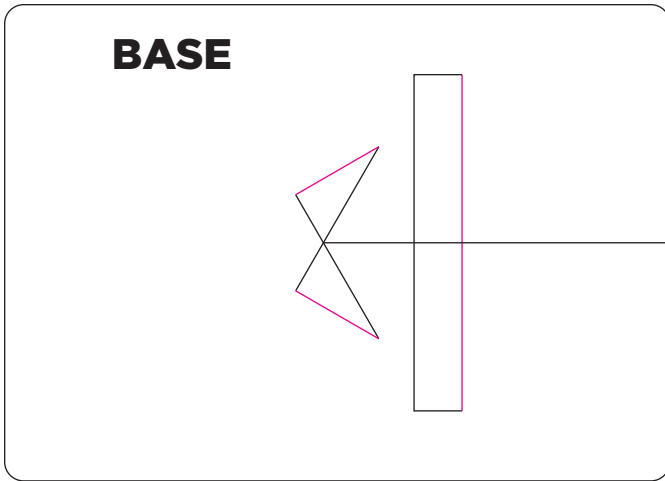


**KAMIGAWA**  
**輝ける世界**  
**NEON DYNASTY**



## KAMIGAWA: NEON DYNASTY PAPERCRAFT

### DISPLAY STAND INSTRUCTIONS

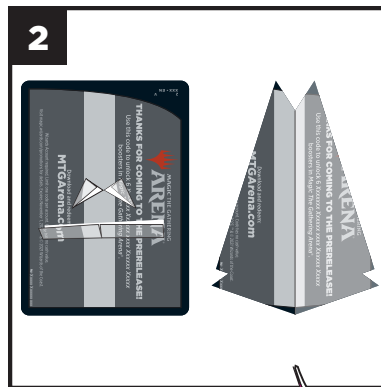


**1:** Cut out the two card-shaped rounded rectangles above.

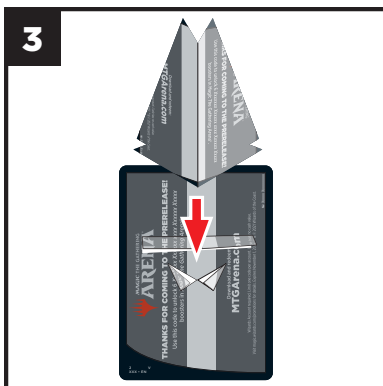
Select two cards you own that no longer have value to upcycle, such as used Arena Code Cards.

Align the rounded rectangles you cut out edge-to-edge with the cards and hold firmly. You can use tape to help hold securely.

Carefully cut along all the black lines while keeping the cutouts and cards aligned.

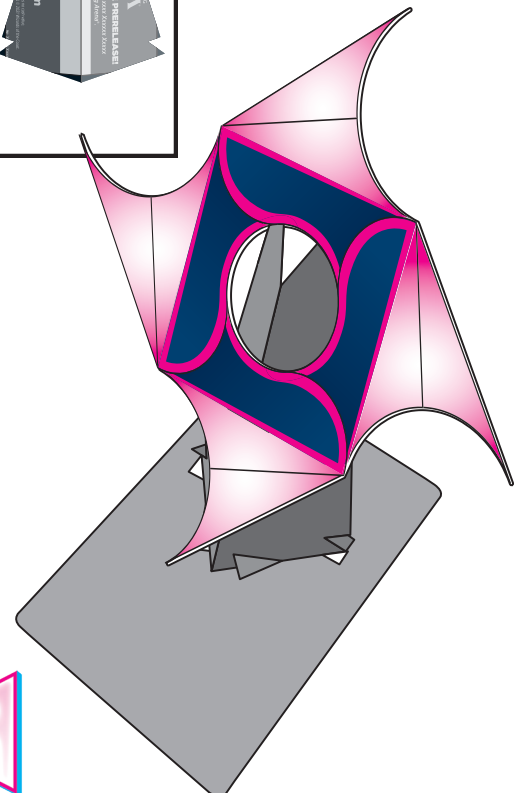


**2:** Fold the cards where indicated by the pink lines. You should now have two pieces that look like the diagram to the left. Note the names of the parts **Base** and **Riser** for the next steps.



**3:** Slide the **Riser** onto the **Base** as shown in the diagram. The folded-up triangles on the **Base** should be over the bottom edges of the **Riser**, near the fold. The rectangular cutouts in the **Base** snap over the left and right triangular cutouts on the **Riser**.

Congratulations, you now have a finished papercraft stand.



**KAMIGAWA**  
輝ける世界  
**NEON DYNASTY**